

GeoVISION™

Borehole Video Systems



www.AlleghenyInstruments.com
Jeff.Hoffer@AlleghenyInstruments.com
800·255·1353 - 540·468·3740

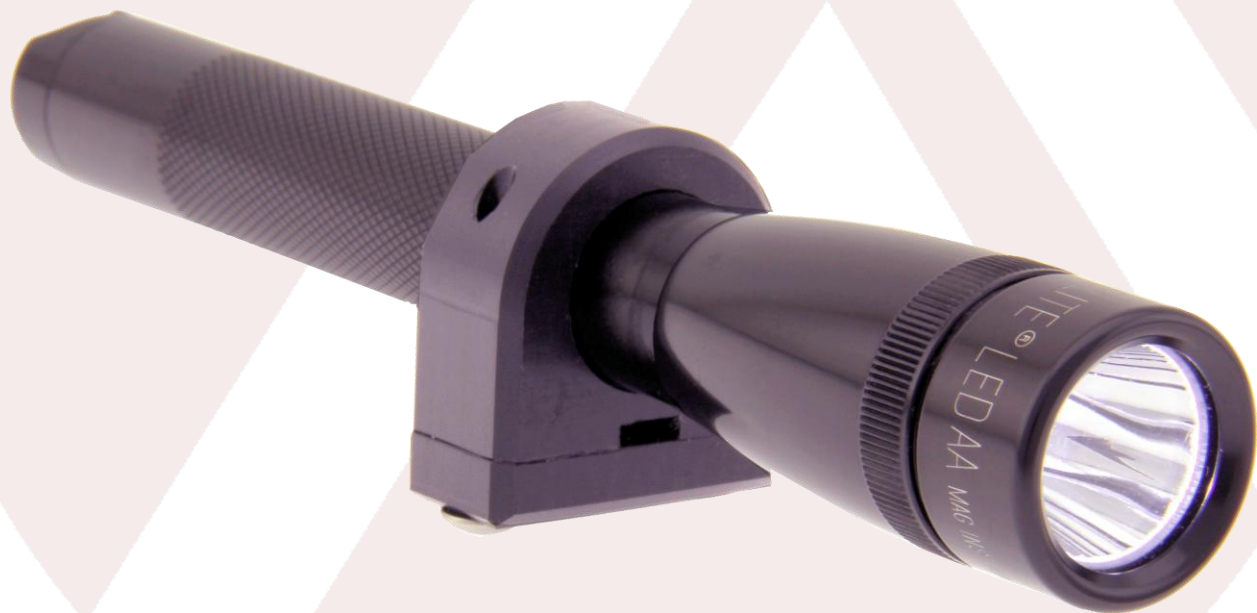
Auxiliary Single Light

GS-0018

The GeoVISION™ Auxiliary Single Light is designed for supplemental lighting in large bores or bores with very dark walls. The Auxiliary Single Light clamps on the cable and is small enough to fit inside a 2 inch (5 cm) bore.

Moving the light source away from the camera increases visibility in turbid water and enhances the view of the bore wall by casting shadows.

Our lights are rated for depths of up to 2,000 feet (600 meters) underwater and pressures up to 1,000 psi.



Specifications:

Weight	6 Ounces (170 grams)
Diameter	1.75 inches (4.5 cm)
Length	6.5 inches (16.5 cm)
Maximum Depth	2,000 feet (600 meters)
Batteries	2 x AA Alkaline

Compatibility:

All Cameras
All Winches